

MONTHLY MEMBERSHIP PROGRESS REPORT

District 27 C1

Results as of: 3/31/2024

GMT:

LOCATION WISCONSIN

GMT CA

Clubs			
RESULTS FOR 2023-2024			
QUARTER	NEW CLUB GOAL	NEW CLUBS	DROPPED CLUBS
JULY/AUG/SEPT	0	0	0
OCT/NOV/DEC	1	0	0
JAN/FEB/MAR	0	0	0
APR/MAY/JUNE	0	0	0

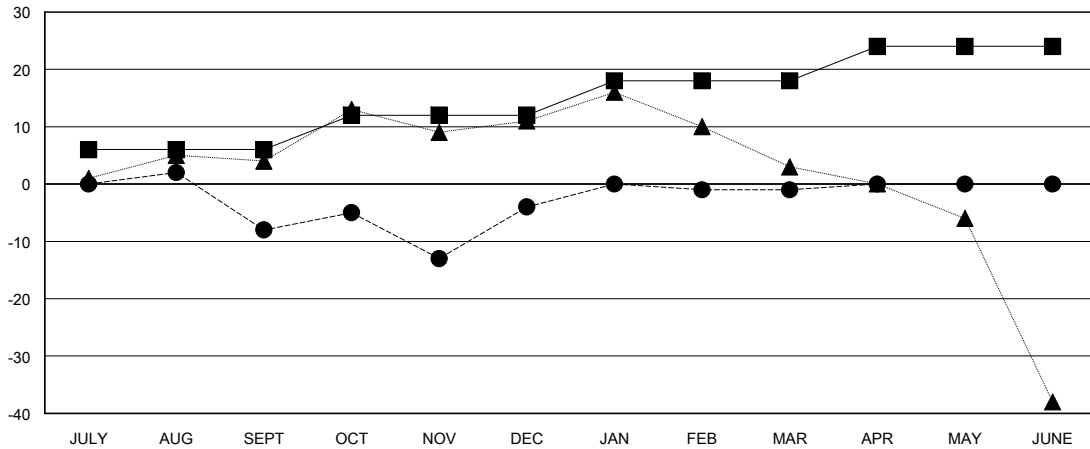
Members			
RESULTS FOR 2023-2024			
QUARTER	MEMBER GROWTH NET GOAL	MEMBER GROWTH ACTUAL	DROPPED MEMBERS ACTUAL (including transfers)
JULY/AUG/SEPT	6	28	34
OCT/NOV/DEC	6	38	34
JAN/FEB/MAR	6	16	12
APR/MAY/JUNE	6	0	0

GOALS AND ACTUAL NEW CLUBS CUMULATIVE



- - CURRENT YEAR GOALS FOR NEW CLUBS
- - CURRENT YEAR ACTUAL NEW CLUBS
- ▲ - LAST YEAR ACTUAL NEW CLUBS

GOALS AND ACTUAL MEMBERS CUMULATIVE



- - MEMBER GROWTH NET GOAL
- - MEMBER GROWTH ACTUAL
- ▲ - LAST YEAR MEMBERSHIP ACTUAL

DROPPED CLUBS: 0	27 CLUBS OF 51 ADDED 1 OR MORE NEW MEMBERS	GENDER DISTRIBUTION
		MALE 961 (70.15%)
		FEMALE 409 (29.85%)
DROPPED MEMBERS	CLICK HERE FOR CUMULATIVE MEMBERSHIP DATA	TOTAL FAMILY UNIT MEMBERS 385
DECEASED 20		FAMILY MEMBERS PAYING HALF DUES 196
CLUB CANCELLED 0		
OTHER 60		
TOTAL 80		